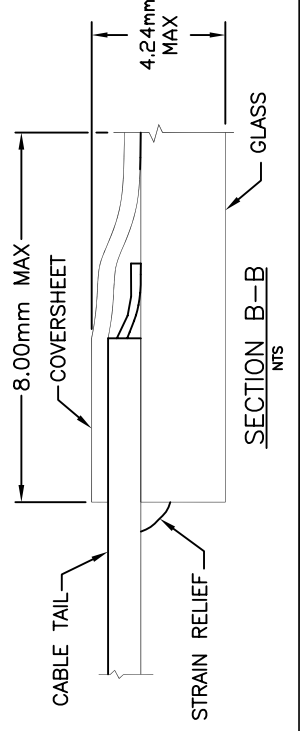
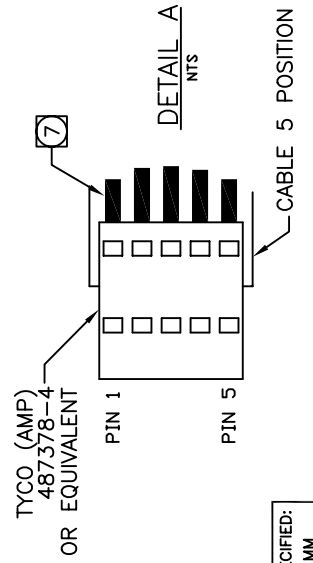
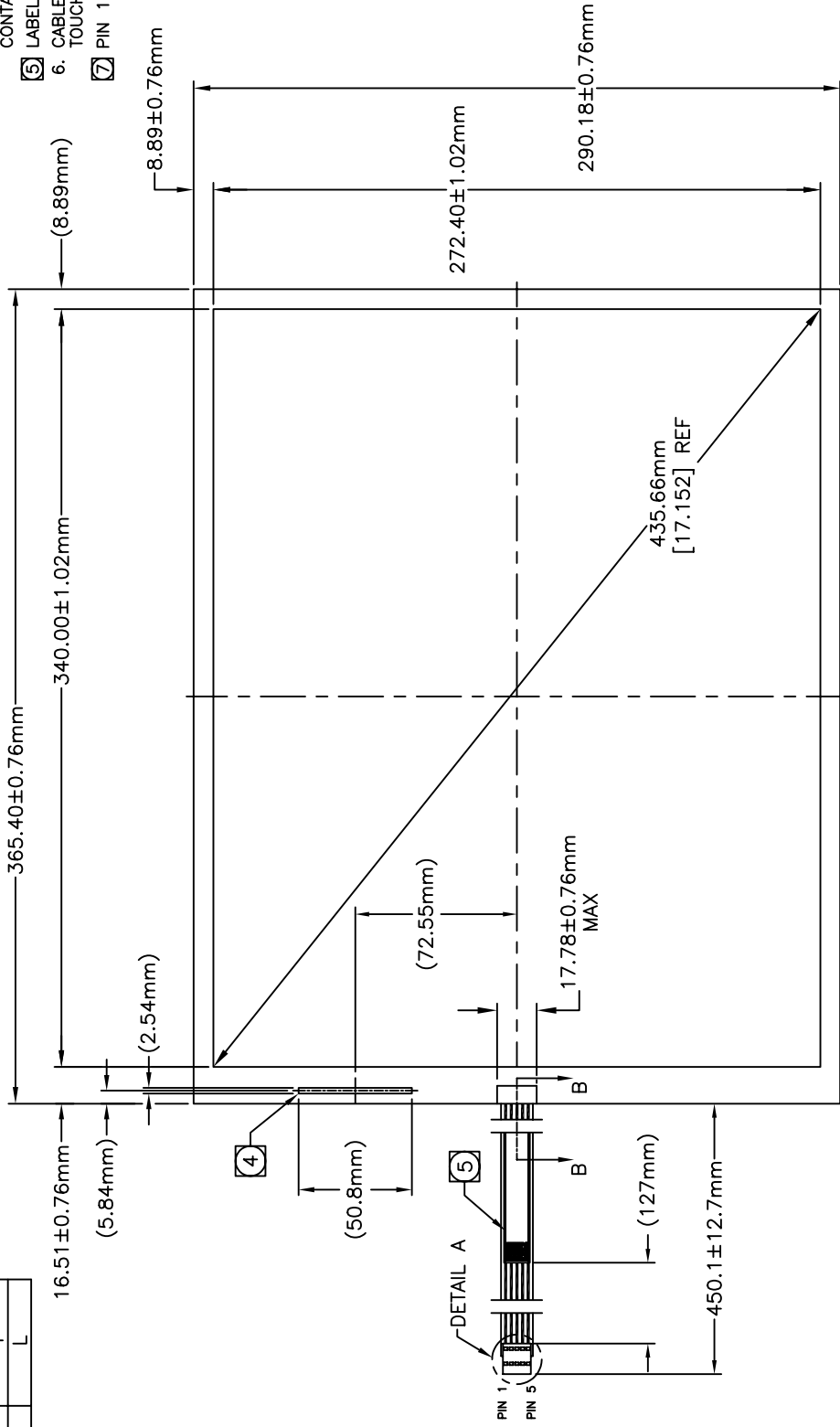


CONNECTOR PINOUT	
PIN NO	DESIGNATION
1	H
2	X
3	S
4	Y
5	L

ACCUTOUCH® TOUCHSCREEN  
 SCN-A5-FLT17.1-Z01-OH1-R  
 ELO P/N: E509854

NOTES:

1. GLASS THICKNESS 3.18mm NOMINAL.
2. FINISHED PART THICKNESS 3.48mm NOMINAL.
3. FINISHED PART THICKNESS AT CABLE ATTACHMENT AREA 4.24mm MAX.
- 4 FINISHED PART THICKNESS AT COVERSHEET CONTACT 3.86mm MAX.
- 5 LABEL TO BE ATTACHED TO FRONT SIDE OF CABLE.
6. CABLE IS ATTACHED TO THE LEFT SIDE OF TOUCHSCREEN AT CENTER POINT AS SHOWN.
- 7 PIN 1 TO BE LOCATED AS SHOWN (SEE DETAIL A).



UNLESS OTHERWISE SPECIFIED:  
 DIMENSIONS ARE IN MM